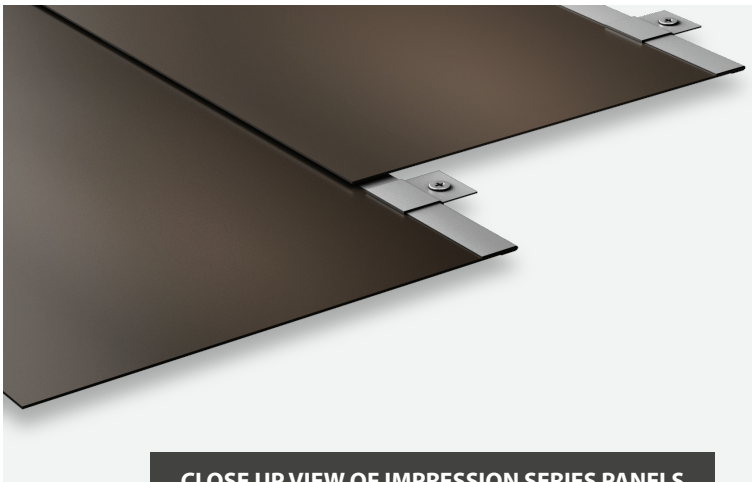


# IMPRESSION SERIES

ROOFING SYSTEMS

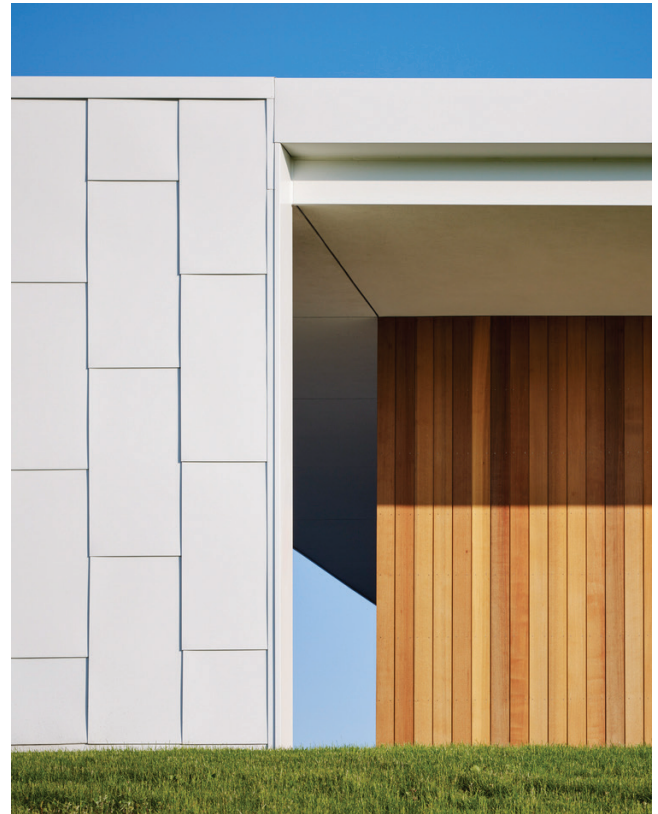
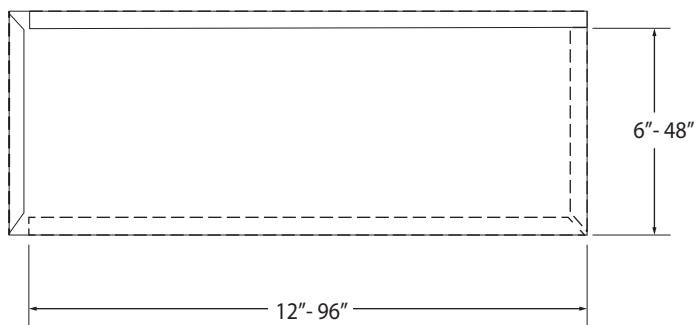


Ward Metals Impression Series is a flat metal wall panel used to create distinctive rectangular shapes with distinct shade lines. It is available in many sizes and can be installed directionally right to left or left to right in a horizontal or vertical application. The panel is installed with concealed clips and fasteners to provide a metal shingle type application on the wall. These panels are formed with underlying substrates, various gauges, and coated with PVDF (Kynar) paint system, providing durability and energy efficiency to any application.



CLOSE UP VIEW OF IMPRESSION SERIES PANELS

## PANEL MEASUREMENTS



## Product Specifications:

**Coverage Width:** 6" to 48"

**Length:** 12" to 96"

**Materials and Thickness:**

22, 24, and 26 GA Galvalume  
.032, .040, .050 Aluminum

**Panel Attachment:** Concealed Fastening System

**Coatings:** Galvalume Plus, Kynar

## Application:

- Functionality for walls
- Installed horizontally or vertically
- Ease of installation - applied directly to solid decking

## Performance Standards:

Limited 40-Year Finish Warranty

CLAD WITH CONFIDENCE.

CALL NOW: 641.629.0878

SALES@WAARDMETALS.COM  
WAARDMETALS.COM