

# GRAVEL STOP

EDGE METAL



Waard Metals Gravel Stop is a tried-and-true, traditional gravel stop design. It features a 1-inch-high gravel stop on the top and a half-inch formed kick on the bottom to divert water away from the building. Our gravel stop can be made with or without cleat and with joint covers or splice plates to conceal the joints between each 10-foot-long piece. It can be made in various materials and thicknesses to help our customers trim out their commercial roofing projects.

## Product Specifications:

**Length:** 10'0"

**Coatings:** Galvalume Plus, Kynar

**Materials and Thickness:** 22 & 24 GA Galvalume  
.040, .050, & .063 Aluminum

## Application:

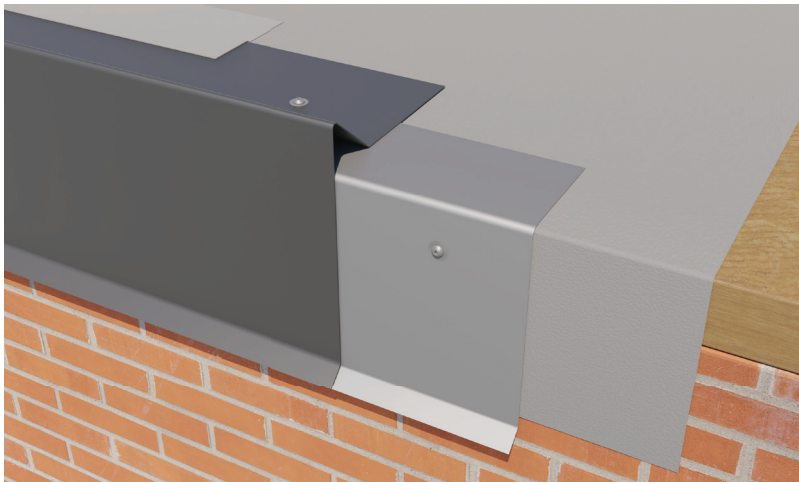
- Installed horizontally
- Ease of installation—can be applied over typical building products for parapet walls and roof edges
- Concealed splice plate enhances color continuity, mitigates water infiltration at joints and maintains overall performance

## Performance Standards:

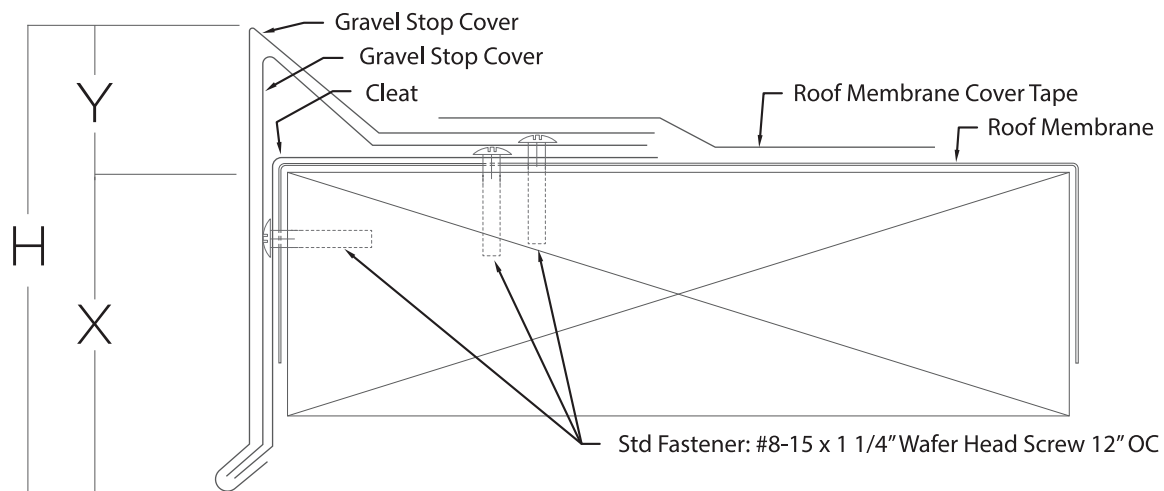
- 25-year finish warranty

\* INSIDE CORNERS, OUTSIDE CORNERS, AND SCUPPERS AVAILABLE

MATERIAL:	DIMENSIONS:
22 & 24 GA Steel and .040 & .050 AL	4" face   5" face   6" face   7" face   8" face



SIDE VIEW OF GRAVEL STOP



CLAD WITH CONFIDENCE.

CALL NOW: 641.629.0878

SALES@WAARDMETALS.COM  
WAARDMETALS.COM