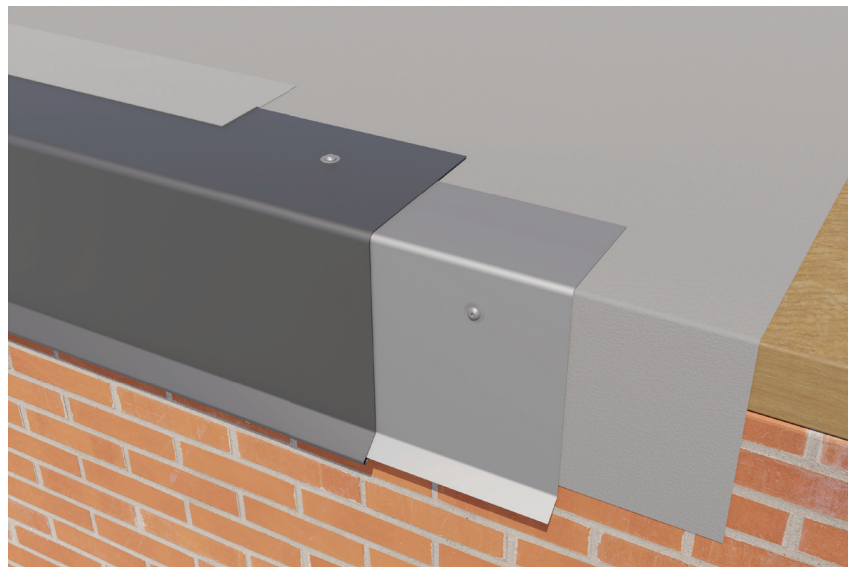


# DRIP EDGE

EDGE METAL



Ward Metals Drip Edge is a tried-and-true, traditional drip edge design. Standard dimensions are a 4-inch face and 3-inch top flange, but Ward can manufacture drip edge to your specifications and required dimensions. Our drip edge can be made with or without cleat to fit your project performance requirements and keep you within budget. We offer joint covers to conceal the splice lines between each 10-foot-long piece. It can be made in various materials and thicknesses to help our customers trim out their commercial roofing projects.



SIDE VIEW OF DRIP EDGE

## Product Specifications:

**Materials and Thickness:** 22 and 24 GA Galvalume, .040, .050, & .063 Aluminum

**Coatings:** Galvalume Plus, Kynar

### Dimensions:

4" face | 5" face | 6" face | 7" face | 8" face

**Wind Warranty:** 120mph with ES-1

## Application:

- Engineered 22 GA cleat with 12-in. OC for easy attachment and installation
- Concealed splice plate enhances color continuity, mitigates water infiltration at joints and maintains overall appearance

## Performance Standards:

- ANSI/SPRI/FM4435 ES-1 Tested
- 25-Year Wind Warranty
- 25-Year Finish Warranty

